

Ask your teacher to share your discoveries:

NAME: \_\_\_\_\_

# PASSPORT



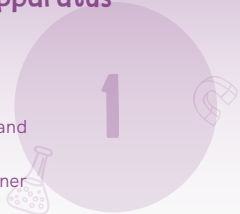
## Learning by Questions SECONDARY SCIENCE

Learning by Questions 

fold here

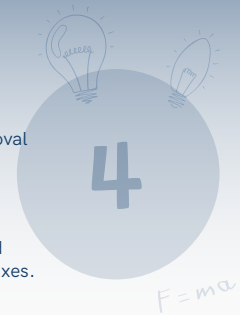
### Identifying and Using Laboratory Apparatus

- I can identify common laboratory apparatus.
- I can scientifically draw common lab apparatus and recognise apparatus from scientific drawings.
- I can identify laboratory heating apparatus and understand why certain apparatus is used.
- I can identify how to safely set up and use a Bunsen burner and heating equipment.



### Processing and Presenting Data

- I can use data to calculate a mean.
- I can calculate a mean, including identification and removal of outliers.
- I can recognise whether a variable has continuous or categorical data.
- I can identify which variable should go on the x-axis and y-axis of a graph and can recognise suitable scales for axes.



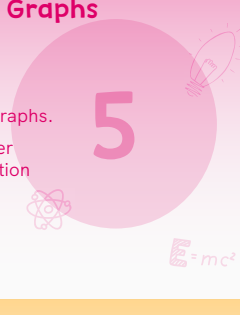
### Identifying Variables and Taking Readings

- I can identify the dependent and independent variables in an investigation.
- I can identify control variables, suggest why they should be controlled and how this should be done.
- I can use information from tables, diagrams and graphs to identify the range and intervals of data.
- I can use a range of scientific equipment to take readings.



### Understanding Graphs and Drawing Graphs

- I can spot anomalies in tables and graphs.
- I can read values from a graph.
- I can identify relationships and draw conclusions from graphs.
- I can identify how to test a hypothesis, recognise whether data supports a hypothesis and give a scientific explanation for a hypothesis.
- I can investigate how temperature affects solubility.



### Carrying out an Investigation and Recording Data

- I can design a results table having been given the names of the independent variable and dependent variable.
- I can recognise risks and suggest how to work safely.
- I can investigate how temperature affects solubility.



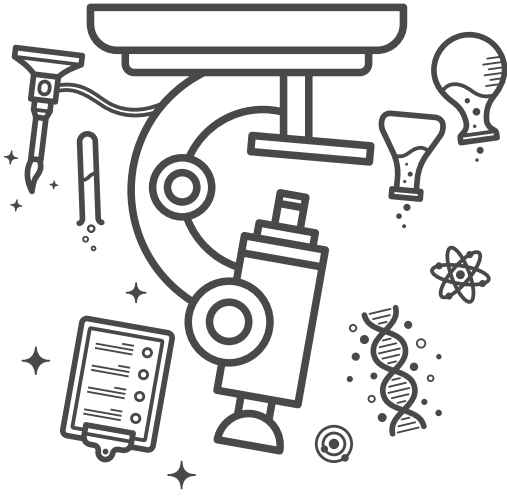
### Using Investigation Skills/Knowledge

- I can answer exam-style questions on the investigation into how temperature affects solubility.
- I know the meanings of key terms used in the planning of investigations and data collection.
- I know the meanings of key terms used in the analysis and evaluation of scientific investigations.



NAME: \_\_\_\_\_

# PASSPORT



## Learning by Questions SECONDARY SCIENCE



fold here

### Identifying and Using Laboratory Apparatus

I can identify common laboratory apparatus.  
I can scientifically draw common lab apparatus and recognise apparatus from scientific drawings.

I can identify laboratory heating apparatus and understand why certain apparatus is used.

I can identify how to safely set up and use a Bunsen burner and heating equipment.



### Identifying Variables and Taking Readings

I can identify the dependent and independent variables in an investigation.

I can identify control variables, suggest why they should be controlled and how this should be done.

I can use information from tables, diagrams and graphs to identify the range and intervals of data.

I can use a range of scientific equipment to take readings.



H<sub>2</sub>O

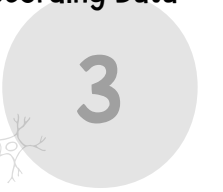


### Carrying out an Investigation and Recording Data

I can design a results table having been given the names of the independent variable and dependent variable.

I can recognise risks and suggest how to work safely.

I can investigate how temperature affects solubility.



### Processing and Presenting Data

I can use data to calculate a mean.

I can calculate a mean, including identification and removal of outliers.

I can recognise whether a variable has continuous or categorical data.

I can identify which variable should go on the x-axis and y-axis of a graph and can recognise suitable scales for axes.



F = ma



### Understanding Graphs and Drawing Graphs

I can spot anomalies in tables and graphs.

I can read values from a graph.

I can identify relationships and draw conclusions from graphs.

I can identify how to test a hypothesis, recognise whether data supports a hypothesis and give a scientific explanation for a hypothesis.

I can investigate how temperature affects solubility.



E = mc<sup>2</sup>



### Using Investigation Skills/Knowledge

I can answer exam-style questions on the investigation into how temperature affects solubility.

I know the meanings of key terms used in the planning of investigations and data collection.

I know the meanings of key terms used in the analysis and evaluation of scientific investigations.

